

Rumblin' in the Gunnison!



HOW MULTI-PURPOSE PROJECTS CAN BRING COMPETING
INTERESTS TOGETHER FOR WIN-WIN OUTCOMES

BY FRANK KUGEL, GUNNISON BASIN ROUNDTABLE

GUNNISON BASIN IMPLEMENTATION PLAN



Prepared for:

The Gunnison Basin Roundtable

For submittal to:

The Colorado Water Conservation Board

April 17, 2015

KEY POINTS OF THE GUNNISON BIP

- **9 GOALS IN THE BIP - NUMBER 1 PRIORITY WAS TO PROTECT EXISTING WATER USES**
- **29 TARGET STREAM REACHES IDENTIFIED IN THE ENVIRONMENTAL / RECREATIONAL NEEDS ASSESSMENT**
- **GOAL 7: DESCRIBE AND ENCOURAGE THE 'BENEFICIAL RELATIONSHIP' BETWEEN AGRICULTURAL AND ENVIRONMENTAL / RECREATIONAL WATER USES**

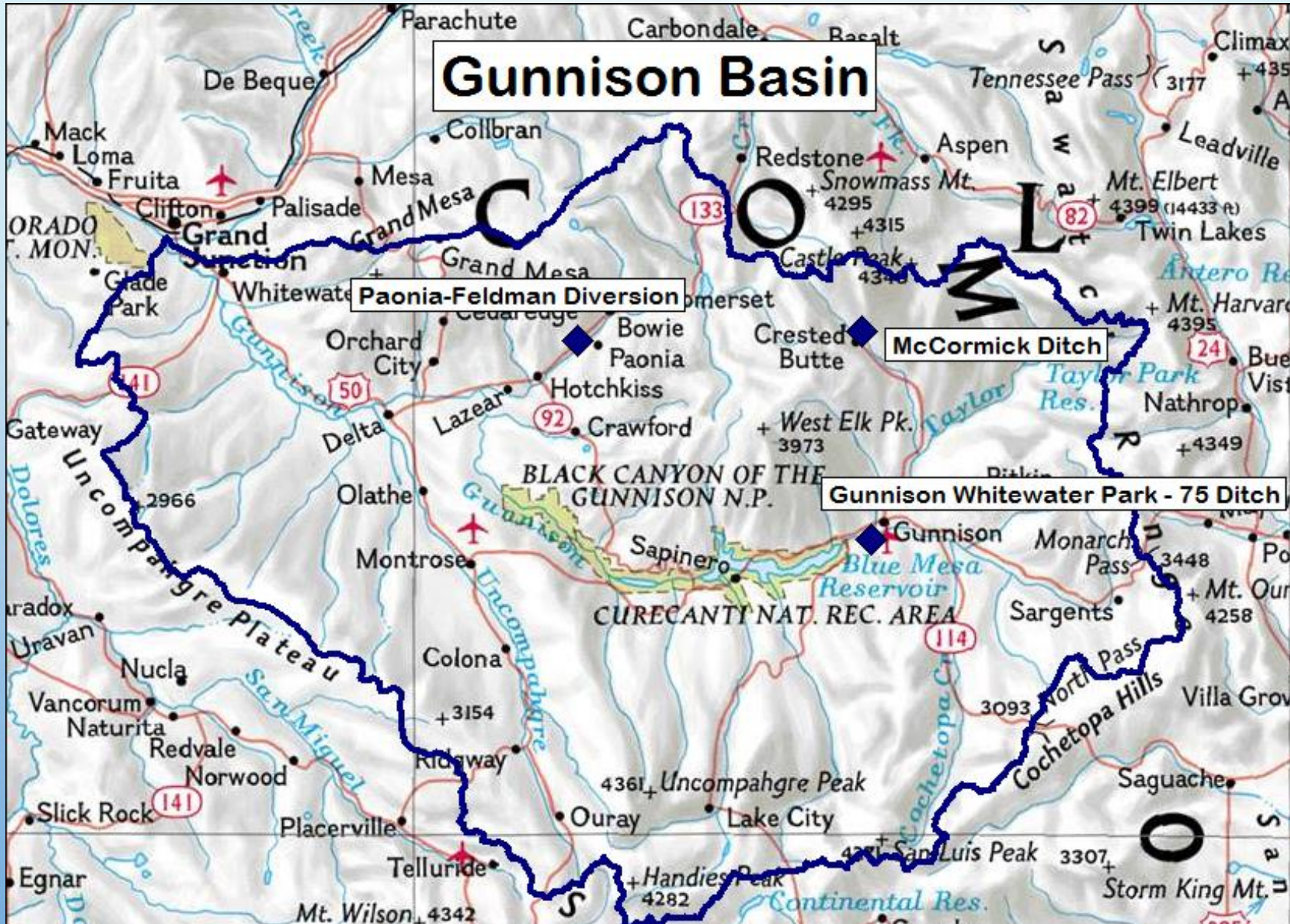
THESE 'BENEFICIAL RELATIONSHIPS' DID NOT ALWAYS PROCEED SMOOTHLY



KEYS TO SUCCESSFUL PARTNERSHIPS 'MAKING STUFF HAPPEN'

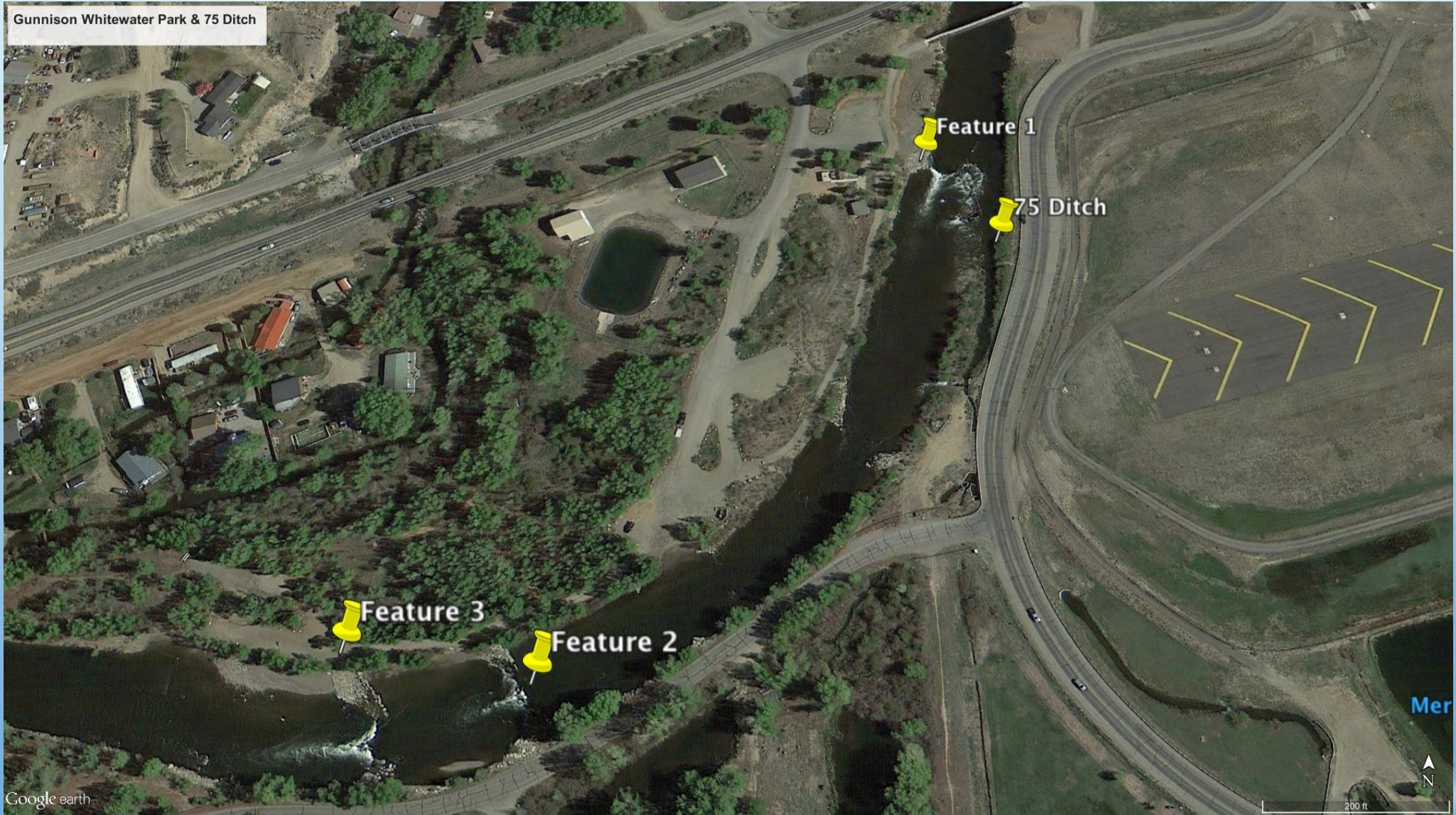
- **LOOK FOR PROJECTS TO ADDRESS MULTIPLE NEEDS:** AG, MUNICIPAL, RIPARIAN HEALTH, ENDANGERED SPECIES, BOATER SAFETY, RECREATIONAL ECONOMY, ETC
- **PUBLIC OUTREACH** – SEEK BROAD STAKEHOLDER AND COMMUNITY SUPPORT
- **MAINTAIN OR IMPROVE WATER SUPPLY FOR ALL USES** – NO INJURY TO EXISTING WATER RIGHTS
- **SEEK FUNDING OPPORTUNITIES AND IN-KIND CONTRIBUTIONS**
 - CWCB WATER SUPPLY RESERVE ACCOUNT AND HEALTHY RIVERS FUND
 - OTHER FEDERAL, STATE, LOCAL, NGO
 - WALTON FAMILY FOUNDATION

EXAMPLES OF 'WIN-WIN' PROJECTS



GUNNISON WHITEWATER PARK - 75 DITCH DIVERSION

Recreational In-Channel Diversion + Ditch Diversion



'Federal Oversight'



75 Ditch

Gunnison Whitewater Park – 1st Feature

MCCORMICK DITCH

COAL CREEK – CRESTED BUTTE



MCCORMICK DITCH

- Note large rock separating ditch from stream channel
- Provides a reinforced drop structure that minimizes need for heavy equipment in stream channel
- Willows replanted for bank stability, riparian health and aesthetics



FELDMAN – PAONIA DIVERSIONS



PAONIA-FELDMAN DIVERSION STRUCTURE

NORTH FORK OF THE GUNNISON RIVER



PAONIA-FELDMAN DIVERSIONS

Channel restored



A group of people are rafting on a river. In the foreground, two people are seen from behind, wearing orange life jackets. The person on the left is wearing a tan hat. The person on the right is wearing a green shirt. The river has white water rapids in the middle ground. In the background, there are green trees and mountains under a blue sky with some clouds. Other rafts are visible further down the river.

Questions???